



# CITY OF BEAUMONT

## Annual Report



### **Fiscal Year 2024-25**

Community Facilities District No. 93-1  
Improvement Area 6A

# Table of Contents

---

## Sections

1	District Profile	1
2	Special Tax Information	1
3	Payment History	2

## Tables

2-1	Maximum Special Tax Rates	1
2-2	Special Tax Breakdown	1

## Appendices

Appendix A – Boundary Map

## Community Facilities District No. 93-1 Improvement Area 6A

### 1. District Profile

#### *Project Description*

The Community Facilities District No. 93-1 Improvement Area 6A (the "CFD No. 93-1 IA 6A"). CFD No. 93-1 IA 6A is authorized to issue bonds to fund the purchase, construction, modification, expansion, improvement or rehabilitation of certain real or other tangible property.

#### *Location*

CFD No. 93-1 IA 6A is comprised of 2 Developable parcels and approximately 15.02 gross acres. CFD No. 93-1 IA 6A is generally located north of Potrero Blvd., west of S Highland Springs Ave., and south of E 1<sup>st</sup> St.

#### *Bond Profile and Principal Amount of Bonds Outstanding*

CFD No. 93-1 IA 6A is not bonded at this time.

### 2. Special Tax Information

#### *Special Tax*

A Special Tax is collected each year to pay service obligations for CFD No. 93-1 IA 6A. The amount collected each year is determined by the Special Tax formula and can vary from year to year, but shall not exceed the maximum authorized (or permitted) Special Tax rates. The amount levied for Fiscal Year 2024-25 tax year is \$7,480.72. The Maximum Special Tax rates for Fiscal Year 2024-25 are as follows:

On each July 1, commencing July 1, 1994, the Maximum Special Tax rate for Developed Property shall be increased by two percent (2.00%) of the amount in effect in the previous Fiscal Year.

*Table 2-1*

*Maximum Special Tax Rates*

Land Use Class	Taxable Unit	Maximum Special Tax
Developable Property	per Acre	\$1,551.97

*Table 2-2*

*Special Tax Breakdown*

Land Use Class	Acres	Levied Amount	Maximum Special Tax	% of Maximum Special Tax
Developable Property	15.02	\$7,480.72	\$23,310.66	32.09%
<b>Total</b>	<b>15.02</b>	<b>\$7,480.72</b>	<b>\$23,310.66</b>	<b>32.09%</b>

### 3. Payment History

Delinquencies are calculated through June 2024 and may reflect parcels that may already be on a payment plan.

#### *Delinquency Rate for Fiscal Year 2023-24*

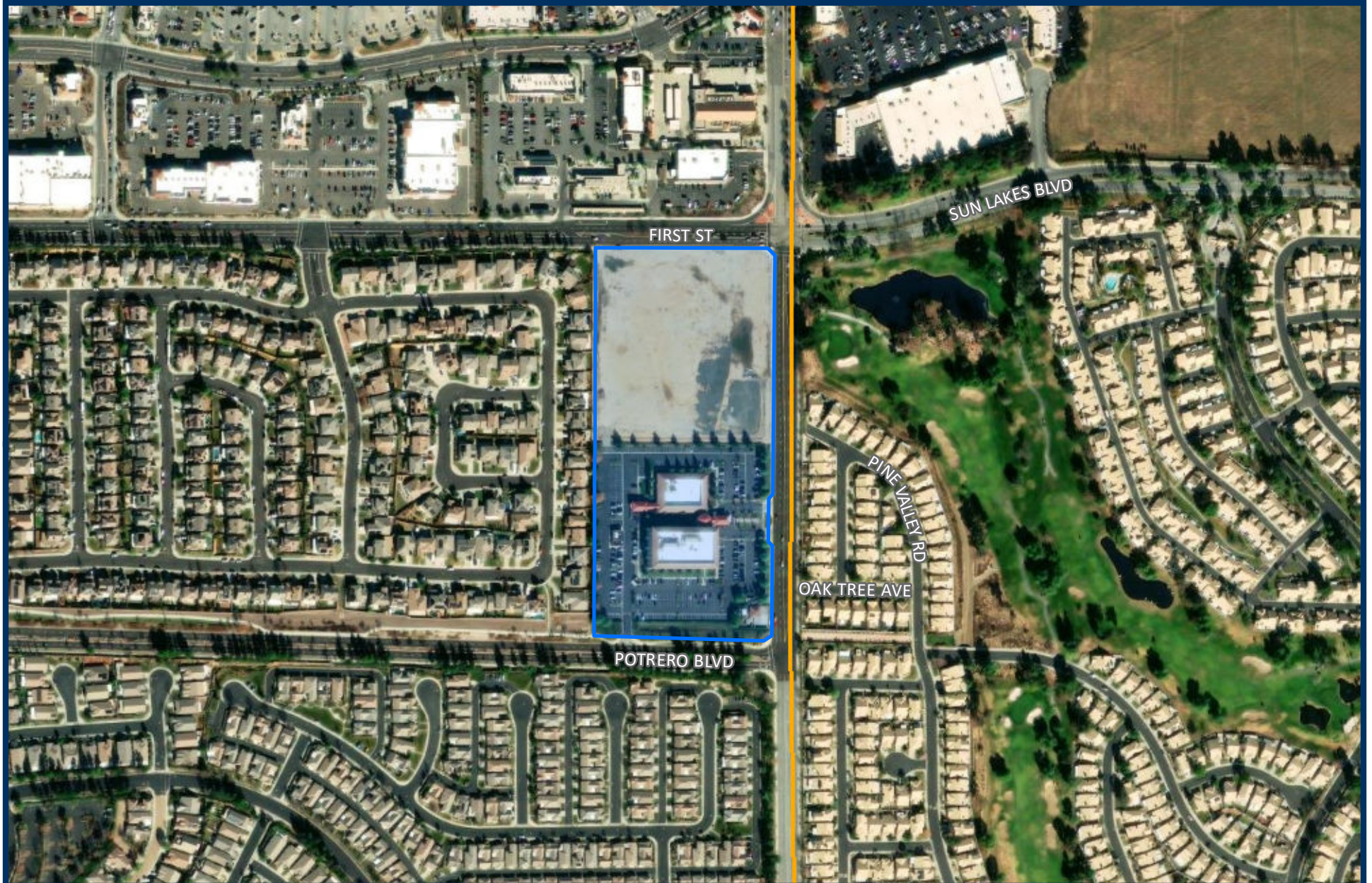
As of June 2024, there were no delinquencies in the payment of the Special Tax for CFD No. 93-1 IA 6A for Fiscal Year 2023-24.



# Appendix A:

## Boundary Map







**S P I C E R**  

---

**CONSULTING GROUP**