



Front Yard Landscaping Requirements

Calculating 50% lot coverage can be challenging at times.

This flyer is meant to assist homeowners in calculating lot coverage to help homeowners to determine if their proposed front yard improvements meet the minimum standards found in the Beaumont Municipal Code (BMC).

The BMC requires that single family residential properties shall have no more than 50% of the front yard and street side yard area be non-pervious surface. The remaining unpaved (pervious) portion of the setback areas shall be landscaped, irrigated, and maintained. At least 1/3 of the landscaped area shall be provided by trees, shrubs, and other plant material. All other areas shall be landscaped with pervious material.

(951)769-8518

Planning@beaumontca.gov

www.beaumontca.gov

550 E. 6th St

Beaumont CA, 92223



“Pervious Surface”–
Grass, wood chips,
decorative rock,
decomposed
granite.
17.06.080 BMC

“Non-Pervious Surface”—Is a surface that does not allow water to penetrate and recharge the ground. Surfaces like driveways, steps, bricks are some examples of non-pervious surfaces.

Example:

Pervious Surfaces			
Artificial Turf	24' x 37'	=	888 sq. ft.
Artificial Turf	10' x 27'	=	270 sq. ft.
Planter	2' x 10'	=	20 sq. ft.
Artificial Turf	9' x 26'	=	234 sq. ft.
Total More Than Non-Pervious Total			1,412 sq. ft.

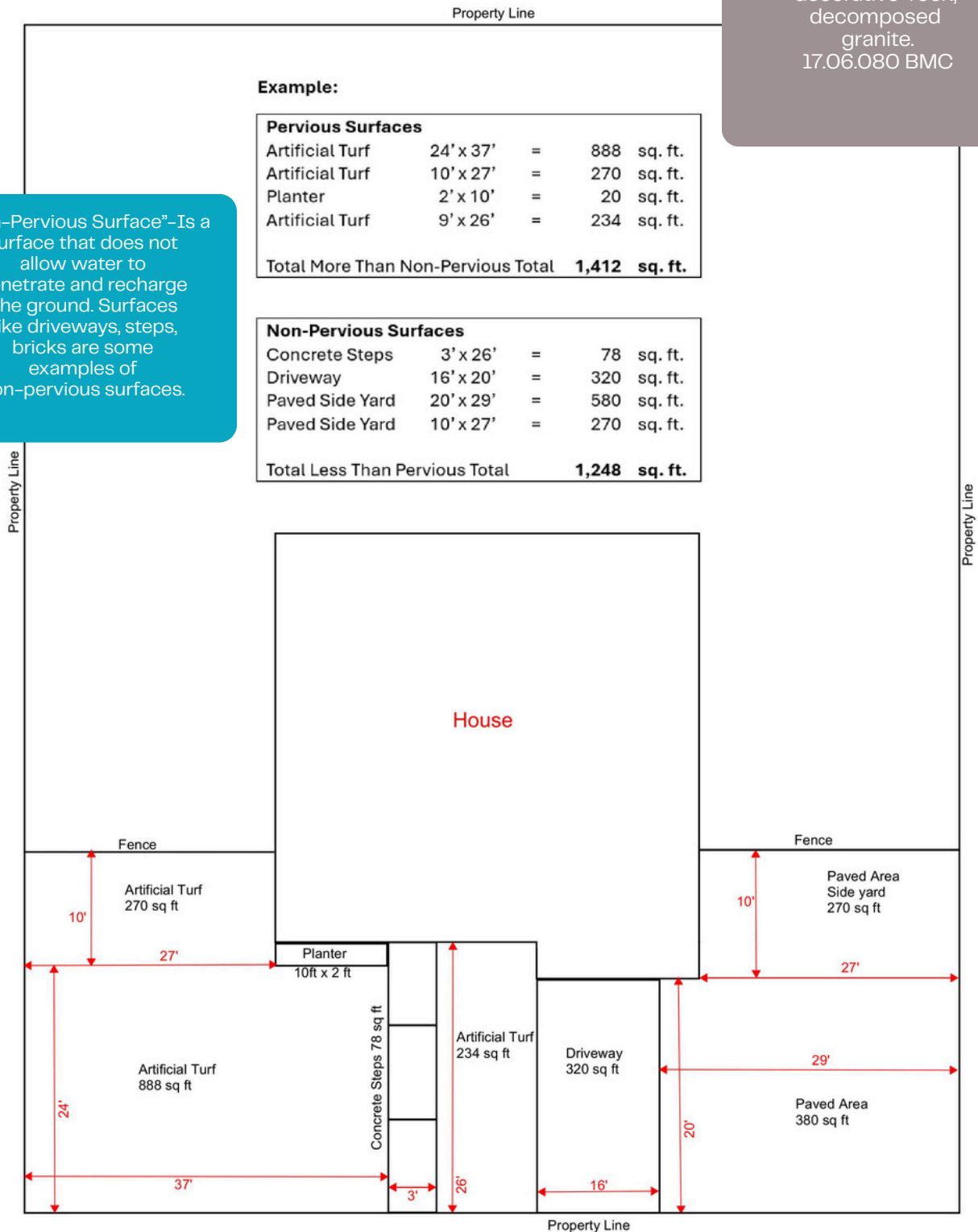
Pervious Surfaces			
Artificial Turf	24' x 37'	=	888 sq. ft.
Artificial Turf	10' x 27'	=	270 sq. ft.
Planter	2' x 10'	=	20 sq. ft.
Artificial Turf	9' x 26'	=	234 sq. ft.
Total More Than Non-Pervious Total			1,412 sq. ft.

Total More Than Non-Pervious Total	1,412 sq. ft.
------------------------------------	---------------

Non-Pervious Surfaces			
Concrete Steps	3' x 26'	=	78 sq. ft.
Driveway	16' x 20'	=	320 sq. ft.
Paved Side Yard	20' x 29'	=	580 sq. ft.
Paved Side Yard	10' x 27'	=	270 sq. ft.
Total Less Than Pervious Total			1,248 sq. ft.

Non-Pervious Surfaces			
Concrete Steps	3' x 26'	=	78 sq. ft.
Driveway	16' x 20'	=	320 sq. ft.
Paved Side Yard	20' x 29'	=	580 sq. ft.
Paved Side Yard	10' x 27'	=	270 sq. ft.
Total Less Than Pervious Total			1,248 sq. ft.

Total Less Than Pervious Total	1,248 sq. ft.
--------------------------------	---------------



Exceptions and variances are not permitted and cannot be issued by the City.